

Elpac Capacitors
date 1989

www.33audio.com

CONTENTS

Definitions	2
Film capacitor basics	3
Performance charts	4
Selection factors	5
Selector guide	6
Practical applications tips	7
PPM/C° vs % change conversion chart	8
Elpac capacitor configurations	9
The Elpac Story	10-11
Elpac capacitor series	13-89
Elpac Representatives & Distributors	90-91
Custom designs for your non-standard applications	93

DESCRIPTION	STYLE A Oval W & F	STYLE B Tubular W & F	STYLE G Rectangular Hermetic	STYLE L Tubular Hermetic	STYLE R Radial Epoxy	STYLE X Axial Epoxy	ACCES- SORIES	PERFORM- ANCE	
ZD SERIES Metallized Polyester	p. 13	p. 14	p. 15	p. 16	p. 17	p. 18	p. 19	p. 20	p. 21
MD SERIES Polyester and Foil	p. 23	p. 24	p. 25	p. 26	p. 27	p. 28	p. 29	p. 30	p. 31
Z SERIES Subminiature Metallized Polyester	p. 33	p. 34	p. 35	p. 36	p. 37	p. 38	p. 39	p. 40	p. 41
B SERIES Metallized Polycarbonate	p. 43	p. 44	p. 45	p. 46	p. 47	p. 48	p. 49	p. 50	p. 51
C SERIES Subminiature Metallized Polycarbonate	p. 53	p. 54	p. 55	p. 56	p. 57	p. 58	p. 59	p. 60	p. 61
HS SERIES Highly Stable Metallized Polycarbonate	p. 63	p. 64							p. 65
PD SERIES Polystyrene and Foil	p. 67	p. 68	p. 69	p. 70	p. 71	p. 72	p. 73	p. 74	p. 75
P SERIES Metallized Polypropylene	p. 77	p. 78	p. 79	p. 80	p. 81	p. 82	p. 83	p. 84	p. 85
PMB SERIES Subminiature Metallized Polypropylene			p. 86						p. 87.
PSB SERIES AC Rated Metallized Polypropylene			p. 88						p. 89

Elpac Capacitors date 1989

APPLICATION CHART

	ZD Metallized Polyester	MD Polyester & Foil	Z Miniature Metallized Polyester	B Metallized Polycarbonate	C Miniature Metallized Polycarbonate	HS Highly Stable Metallized Polycarbonate	PD Polystyrene & Foil	P Metallized Polypropylene	PMB Metallized Polypropylene	PSB Metallized Polypropylene
APPLICATION										
Coupling	Yes	Yes	Yes	Yes	Yes	Yes	Occasional	Yes	Yes	ACRATED
Bypass & Filtering	Yes	Yes	Yes	Yes	Yes	Yes	Seldom	Yes	Yes	LOW ESR
Timing	Occasional	Occasional	Occasional	Yes	Yes	Yes	Yes	Yes	Yes	SWITCHING REGULATORS
Pulse-Discharge	Yes	Yes	Occasional	Yes	Occasional	Seldom	No	Seldom	Seldom	CRITICAL FILTERING
Arc Suppression	Yes	Yes	Yes	Occasional	Occasional	Seldom	No	Seldom	Seldom	HIGH FREQUENCY
Ripple Suppression	Occasional	Yes	Occasional	Occasional	Occasional	Seldom	No	Seldom	Seldom	
Freq. Determination (tuning)	No	No	No	Yes	Yes	Yes	Yes	Yes	Yes	
CAPACITANCE RANGE										
Style										
A (W&F Oval)	.001/10.0	.001/5.0	.001/25.0	.001/10.0	.001/12.0		.001/1.5	.001/4.0	.001/4.0	-
B (W&F Tubular)	.001/10.0	.001/5.0	.001/25.0	.001/10.0	.001/12.0	.001/10.0	.001/1.5	.001/4.0	.001/10.0	47/10.0
G (Hermetic Rectangular)	.001/4.0	.001/2.0	.001/8.0	.001/2.0	.001/8.0		.001/1.0	.001/4.7	-	-
L (Hermetic Tubular)	.001/10.0	.001/5.0	.001/25.0	.001/10.0	.001/12.0		.001/2.0	.001/3.0	-	-
R (Epoxy Radial)	.001/5.0	.001/3.0	.001/15.0	.001/5.0	.001/12.0		.001/2.0	.001/2.0	-	-
X (Epoxy Axial)	.001/4.0	.001/2.0	.001/10.0	.001/4.0	.001/12.0		.001/1.0	.001/1.0	-	-
VOLTAGE RANGE (VDC)(NOMINAL)	50 to 600	50 to 600	50 to 600	50 to 600	50 to 600	50 to 600	50 to 400	50 to 600	50 to 600	100 to 400
TEMP RANGE -55° C to	125° C	125° C	125° C	125° C FULL RATED	125° C FULL RATED	125° C FULL RATED	85° C MAX	105° C FULL RATED	105° C FULL RATED	105° C FULL RATED
Derate From	85° C (to 50%)	85° C (to 50%)	85° C (to 50%)	Not Req'd	Not Req'd	Not Req'd	Not Req'd	Not Req'd	Not Req'd	Not Req'd
TEMP. COEFF. (PPM/° C) -55°C to +125°C -55°C to +105°C -55°C to +85° C	960	960	960	120	120	120	90	300	300	300
DISSIPATION FACTOR(%@ 1 KHz*)	1.0	0.5	1.0	0.3	0.3	0.3	0.1	0.1	0.1	0.1
INSULATION RES.** (Megohm x MFD)	10,000	50,000	10,000	25,000	25,000	50,000	100,000	50,000	50,000	50,000
Need Not Exceed (Megohms)	40,000	100,000	40,000	50,000	50,000	100,000	200,000	100,000	100,000	100,000
DIELECTRIC STRENGTH*** As % of DC Rating Term to Term Term to Case	150 200	200 200	150 200	150 200	150 200	150 200	200 200	150 200	150 200	150 200
* Except values over 1 uf at 60 Hz ** Measured at rated voltage or 100 volts, whichever is less, after 2 minutes electrification *** Measured at dc test potential for 60 seconds through limiting resistance of 100 ohms/volt NOTE: OTHER CAPACITANCE TOLERANCES, VOLTAGES, AND SIZES AVAILABLE ON SPECIAL REQUEST										

www.33audio.com

Elpac date 1989

Style BA Metallized Polycarbonate Capacitors

- 125°C without derating, low dielectric absorption.
- Non-inductive, self-healing metallized construction.
- Standard tolerances: $\pm 20\%$, $\pm 10\%$, $\pm 5\%$.

See page 51 for ordering information

Oval Wrap and Fill

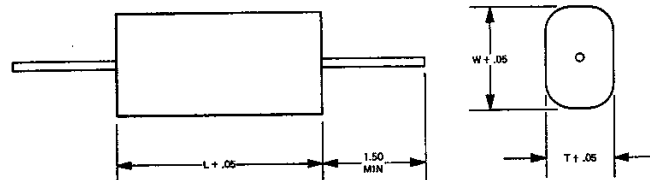



SIZES AND PART NUMBERS

Other capacitances, voltages and tolerances available on special request.

MFD	50 VDC				100 VDC				200 VDC				400 VDC				600 VDC			
	T	W	L	PART NO.	T	W	L	PART NO.	T	W	L	PART NO.	T	W	L	PART NO.	T	W	L	PART NO.
.001	.10	.20	.40	B5A102	.10	.20	.40	B1A102	.10	.20	.40	B2A102	.10	.20	.40	B4A102	.10	.20	.40	B6A102
.0012	.10	.20	.40	B5A122	.10	.20	.40	B1A122	.10	.20	.40	B2A122	.10	.20	.40	B4A122	.10	.20	.40	B6A122
.0015	.10	.20	.40	B5A152	.10	.20	.40	B1A152	.10	.20	.40	B2A152	.10	.20	.40	B4A152	.10	.20	.40	B6A152
.0018	.10	.20	.40	B5A182	.10	.20	.40	B1A182	.10	.20	.40	B2A182	.10	.20	.40	B4A182	.10	.20	.40	B6A182
.0022	.10	.20	.40	B5A222	.10	.20	.40	B1A222	.10	.20	.40	B2A222	.10	.20	.40	B4A222	.10	.20	.40	B6A222
.0027	.10	.20	.40	B5A272	.10	.20	.40	B1A272	.10	.20	.40	B2A272	.10	.20	.40	B4A272	.12	.23	.40	B6A272
.0033	.10	.20	.40	B5A332	.10	.20	.40	B1A332	.10	.20	.40	B2A332	.12	.22	.40	B4A332	.14	.24	.40	B6A332
.0039	.10	.20	.40	B5A392	.10	.20	.40	B1A392	.10	.20	.40	B2A392	.13	.23	.40	B4A392	.10	.20	.53	B6A392
.0047	.10	.20	.40	B5A472	.10	.20	.40	B1A472	.10	.20	.40	B2A472	.10	.20	.53	B4A472	.11	.21	.53	B6A472
.0056	.10	.20	.40	B5A562	.10	.20	.40	B1A562	.11	.22	.40	B2A562	.10	.20	.53	B4A562	.13	.21	.53	B6A562
.0068	.10	.20	.40	B5A682	.10	.20	.40	B1A682	.13	.23	.40	B2A682	.10	.20	.53	B4A682	.14	.25	.53	B6A682
.0082	.10	.20	.40	B5A822	.10	.20	.40	B1A822	.10	.20	.53	B2A822	.11	.21	.53	B4A822	.15	.26	.53	B6A822
.01	.10	.20	.40	B5A103	.10	.20	.40	B1A103	.10	.20	.53	B2A103	.12	.22	.53	B4A103	.17	.27	.53	B6A103
.012	.10	.20	.40	B5A123	.10	.20	.40	B1A123	.11	.20	.53	B2A123	.14	.23	.53	B4A123	.19	.29	.53	B6A123
.015	.10	.22	.40	B5A153	.10	.22	.40	B1A153	.13	.21	.53	B2A153	.16	.24	.53	B4A153	.21	.31	.53	B6A153
.018	.12	.22	.40	B5A183	.12	.22	.40	B1A183	.15	.22	.53	B2A183	.18	.26	.53	B4A183	.23	.33	.53	B6A183
.022	.14	.23	.40	B5A223	.14	.23	.40	B1A223	.17	.25	.53	B2A223	.20	.27	.53	B4A223	.21	.31	.65	B6A223
.027	.10	.20	.53	B5A273	.10	.20	.53	B1A273	.18	.27	.53	B2A273	.23	.31	.53	B4A273	.22	.35	.65	B6A273
.033	.11	.20	.53	B5A333	.11	.20	.53	B1A333	.18	.32	.53	B2A333	.19	.27	.65	B4A333	.22	.32	.78	B6A333
.039	.12	.21	.53	B5A393	.12	.21	.53	B1A393	.20	.33	.53	B2A393	.21	.29	.65	B4A393	.23	.33	.78	B6A393
.047	.14	.22	.53	B5A473	.14	.22	.53	B1A473	.23	.36	.53	B2A473	.23	.31	.65	B4A473	.27	.37	.78	B6A473
.056	.15	.24	.53	B5A563	.15	.24	.53	B1A563	.18	.25	.78	B2A563	.21	.30	.78	B4A563	.29	.39	.78	B6A563
.068	.16	.26	.53	B5A683	.16	.26	.53	B1A683	.20	.27	.78	B2A683	.24	.32	.78	B4A683	.33	.42	.78	B6A683
.082	.18	.29	.53	B5A823	.18	.29	.53	B1A823	.23	.30	.78	B2A823	.26	.34	.78	B4A823	.34	.52	.78	B6A823
.1	.20	.32	.53	B5A104	.20	.32	.53	B1A104	.25	.33	.78	B2A104	.29	.40	.78	B4A104	.33	.49	.90	B6A104
.12	.22	.33	.53	B5A124	.22	.33	.53	B1A124	.24	.32	.90	B2A124	.33	.42	.78	B4A124	.31	.45	1.17	B6A124
.15	.19	.29	.65	B5A154	.19	.29	.65	B1A154	.27	.34	.90	B2A154	.30	.45	.90	B4A154	.34	.52	1.17	B6A154
.18	.21	.32	.65	B5A184	.21	.32	.65	B1A184	.30	.39	.90	B2A184	.33	.48	.90	B4A184	.39	.55	1.17	B6A184
.22	.24	.34	.65	B5A224	.24	.34	.65	B1A224	.34	.42	.90	B2A224	.31	.45	1.17	B4A224	.43	.60	1.17	B6A224
.27	.19	.32	.90	B5A274	.19	.32	.90	B1A274	.32	.42	1.17	B2A274	.35	.50	1.17	B4A274	.36	.56	1.68	B6A274
.33	.21	.34	.90	B5A334	.21	.34	.90	B1A334	.34	.44	1.17	B2A334	.39	.52	1.17	B4A334	.41	.61	1.68	B6A334
.39	.24	.36	.90	B5A394	.24	.36	.90	B1A394	.32	.40	1.40	B2A394	.43	.56	1.17	B4A394	.46	.65	1.68	B6A394
.47	.27	.38	.90	B5A474	.27	.38	.90	B1A474	.36	.44	1.40	B2A474	.48	.64	1.17	B4A474	.51	.71	1.68	B6A474
.56	.30	.43	.90	B5A564	.30	.43	.90	B1A564	.39	.46	1.40	B2A564	.38	.59	1.68	B4A564	.50	.77	1.68	B6A564
.68	.33	.47	.90	B5A684	.33	.47	.90	B1A684	.44	.52	1.40	B2A684	.43	.64	1.68	B4A684	.49	.88	2.00	B6A684
.82	.32	.38	1.17	B5A824	.32	.38	1.17	B1A824	.47	.58	1.40	B2A824	.48	.69	1.68	B4A824	.50	.89	2.25	B6A824
1.0	.34	.47	1.17	B5A105	.34	.47	1.17	B1A105	.44	.59	1.68	B2A105	.54	.75	1.68	B4A105	.57	.96	2.25	B6A105
1.5	.43	.58	1.17	B5A155	.43	.58	1.17	B1A155	.55	.68	1.95	B2A155	.62	.82	2.00	B4A155				
2.0	.43	.58	1.40	B5A205	.43	.58	1.40	B1A205	.58	.85	1.95	B2A205	.73	.91	2.00	B4A205				
3.0	.49	.61	1.68	B5A305	.49	.61	1.68	B1A305	.78	1.05	1.95	B2A305	.92	1.15	2.00	B4A305				
4.0	.55	.70	1.95	B5A405	.55	.70	1.95	B1A405	.88	1.15	2.25	B2A405	1.05	1.28	2.25	B4A405				
5.0	.60	.75	1.95	B5A505	.60	.75	1.95	B1A505	.98	1.30	2.25	B2A505	1.18	1.40	2.25	B4A505				
6.0	.70	.85	2.25	B5A605	.70	.85	2.25	B1A605												
8.0	.85	.95	2.25	B5A805	.85	.95	2.25	B1A805												
10.0	.85	1.15	2.25	B5A106	.85	1.15	2.25	B1A106												

LEAD SIZE		
CASE LENGTH	A.W.G.	LEAD DIA.
.40 THRU .65	NO. 24	.020
.78 THRU .90	NO. 22	.025
1.17 THRU 2.25	NO. 20	.032



ELPAC COMPONENTS  3131 S. Standard Avenue, Santa Ana, CA 92705
Telephone (714) 979-4440 FAX (714) 241-7293

Elpac date 1989

www.33audio.com

- 125°C without derating, low dielectric absorption.
- Non-inductive, self-healing metallized construction.
- Standard tolerances: ±20%, ±10%, ±5%, ±3%, ±2%, ±1%.

See page 51 for ordering information

Metallized Polycarbonate Capacitors

Tubular Wrap and Fill

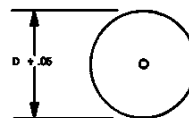
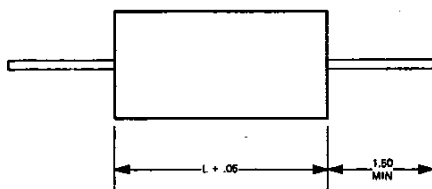
Style BB



SIZES AND PART NUMBERS

Other capacitances, voltages and tolerances available on special request.

MFD	50 VDC			100 VDC			200 VDC			400 VDC			600 VDC		
	D	L	PART NO.	D	L	PART NO.	D	L	PART NO.	D	L	PART NO.	D	L	PART NO.
.001	.15	.40	B5B102	.15	.40	B1B102	.15	.40	B2B102	.15	.40	B4B102	.15	.40	B6B102
.0012	.15	.40	B5B122	.15	.40	B1B122	.15	.40	B2B122	.15	.40	B4B122	.15	.40	B6B122
.0015	.15	.40	B5B152	.15	.40	B1B152	.15	.40	B2B152	.15	.40	B4B152	.15	.40	B6B152
.0018	.15	.40	B5B182	.15	.40	B1B182	.15	.40	B2B182	.15	.40	B4B182	.15	.40	B6B182
.0022	.15	.40	B5B222	.15	.40	B1B222	.15	.40	B2B222	.15	.40	B4B222	.16	.40	B6B222
.0027	.15	.40	B5B272	.15	.40	B1B272	.15	.40	B2B272	.15	.40	B4B272	.18	.40	B6B272
.0033	.15	.40	B5B332	.15	.40	B1B332	.15	.40	B2B332	.17	.40	B4B332	.21	.40	B6B332
.0039	.15	.40	B5B392	.15	.40	B1B392	.17	.40	B2B392	.18	.40	B4B392	.15	.53	B6B392
.0047	.15	.40	B5B472	.15	.40	B1B472	.17	.40	B2B472	.15	.53	B4B472	.16	.53	B6B472
.0056	.15	.40	B5B562	.15	.40	B1B562	.18	.40	B2B562	.15	.53	B4B562	.18	.53	B6B562
.0068	.15	.40	B5B682	.15	.40	B1B682	.19	.40	B2B682	.15	.53	B4B682	.20	.53	B6B682
.0082	.15	.40	B5B822	.15	.40	B1B822	.16	.53	B2B822	.16	.53	B4B822	.21	.53	B6B822
.01	.15	.40	B5B103	.15	.40	B1B103	.17	.53	B2B103	.18	.53	B4B103	.23	.53	B6B103
.012	.16	.40	B5B123	.16	.40	B1B123	.18	.53	B2B123	.19	.53	B4B123	.25	.53	B6B123
.015	.18	.40	B5B153	.18	.40	B1B153	.19	.53	B2B153	.21	.53	B4B153	.27	.53	B6B153
.018	.19	.40	B5B183	.19	.40	B1B183	.20	.53	B2B183	.23	.53	B4B183	.30	.53	B6B183
.022	.20	.40	B5B223	.20	.40	B1B223	.22	.53	B2B223	.25	.53	B4B223	.27	.65	B6B223
.027	.16	.53	B5B273	.16	.53	B1B273	.24	.53	B2B273	.28	.53	B4B273	.30	.65	B6B273
.033	.17	.53	B5B333	.17	.53	B1B333	.27	.53	B2B333	.25	.65	B4B333	.29	.78	B6B333
.039	.19	.53	B5B393	.19	.53	B1B393	.28	.53	B2B393	.27	.65	B4B393	.31	.78	B6B393
.047	.20	.53	B5B473	.20	.53	B1B473	.32	.53	B2B473	.29	.65	B4B473	.34	.78	B6B473
.056	.21	.53	B5B563	.21	.53	B1B563	.24	.78	B2B563	.27	.78	B4B563	.36	.78	B6B563
.068	.23	.53	B5B683	.23	.53	B1B683	.26	.78	B2B683	.30	.78	B4B683	.40	.78	B6B683
.082	.25	.53	B5B823	.25	.53	B1B823	.28	.78	B2B823	.33	.78	B4B823	.45	.78	B6B823
.1	.28	.53	B5B104	.28	.53	B1B104	.31	.78	B2B104	.36	.78	B4B104	.44	.90	B6B104
.12	.30	.53	B5B124	.30	.53	B1B124	.30	.90	B2B124	.40	.78	B4B124	.42	1.17	B6B124
.15	.28	.65	B5B154	.28	.65	B1B154	.33	.90	B2B154	.41	.90	B4B154	.45	1.17	B6B154
.18	.30	.65	B5B184	.30	.65	B1B184	.37	.90	B2B184	.44	.90	B4B184	.50	1.17	B6B184
.22	.33	.65	B5B224	.33	.65	B1B224	.40	.90	B2B224	.42	1.17	B4B224	.54	1.17	B6B224
.27	.28	.90	B5B274	.28	.90	B1B274	.38	1.17	B2B274	.46	1.17	B4B274	.49	1.68	B6B274
.33	.31	.90	B5B334	.31	.90	B1B334	.42	1.17	B2B334	.50	1.17	B4B334	.53	1.68	B6B334
.39	.33	.90	B5B394	.33	.90	B1B394	.38	1.40	B2B394	.54	1.17	B4B394	.55	1.68	B6B394
.47	.36	.90	B5B474	.36	.90	B1B474	.45	1.40	B2B474	.59	1.17	B4B474	.60	1.68	B6B474
.56	.39	.90	B5B564	.39	.90	B1B564	.48	1.40	B2B564	.52	1.68	B4B564	.65	1.68	B6B564
.68	.44	.90	B5B684	.44	.90	B1B684	.52	1.40	B2B684	.57	1.68	B4B684	.67	2.00	B6B684
.82	.39	1.17	B5B824	.39	1.17	B1B824	.56	1.40	B2B824	.62	1.68	B4B824	.74	2.25	B6B824
1.0	.44	1.17	B5B105	.44	1.17	B1B105	.48	1.68	B2B105	.68	1.68	B4B105	.79	2.25	B6B105
1.5	.54	1.17	B5B155	.54	1.17	B1B155	.62	1.95	B2B155	.76	2.00	B4B155			
2.0	.55	1.40	B5B205	.55	1.40	B1B205	.73	1.95	B2B205	.87	2.00	B4B205			
3.0	.61	1.68	B5B305	.61	1.68	B1B305	.91	1.95	B2B305	1.06	2.00	B4B305			
4.0	.65	1.95	B5B405	.65	1.95	B1B405	.98	2.25	B2B405	1.16	2.25	B4B405			
5.0	.71	1.95	B5B505	.71	1.95	B1B505	1.11	2.25	B2B505	1.29	2.25	B4B505			
6.0	.74	2.25	B5B605	.74	2.25	B1B605									
8.0	.84	2.25	B5B805	.84	2.25	B1B805									
10.0	.93	2.25	B5B106	.93	2.25	B1B106									



LEAD SIZE		
CASE LENGTH	A.W.G.	LEAD DIA.
.40 THRU .65	NO. 24	.020
.78 THRU .90	NO. 22	.025
1.17 THRU 2.25	NO. 20	.032

ELPAC COMPONENTS



3131 S. Standard Avenue, Santa Ana, CA 92705
Telephone (714) 979-4440 FAX (714) 241-7293